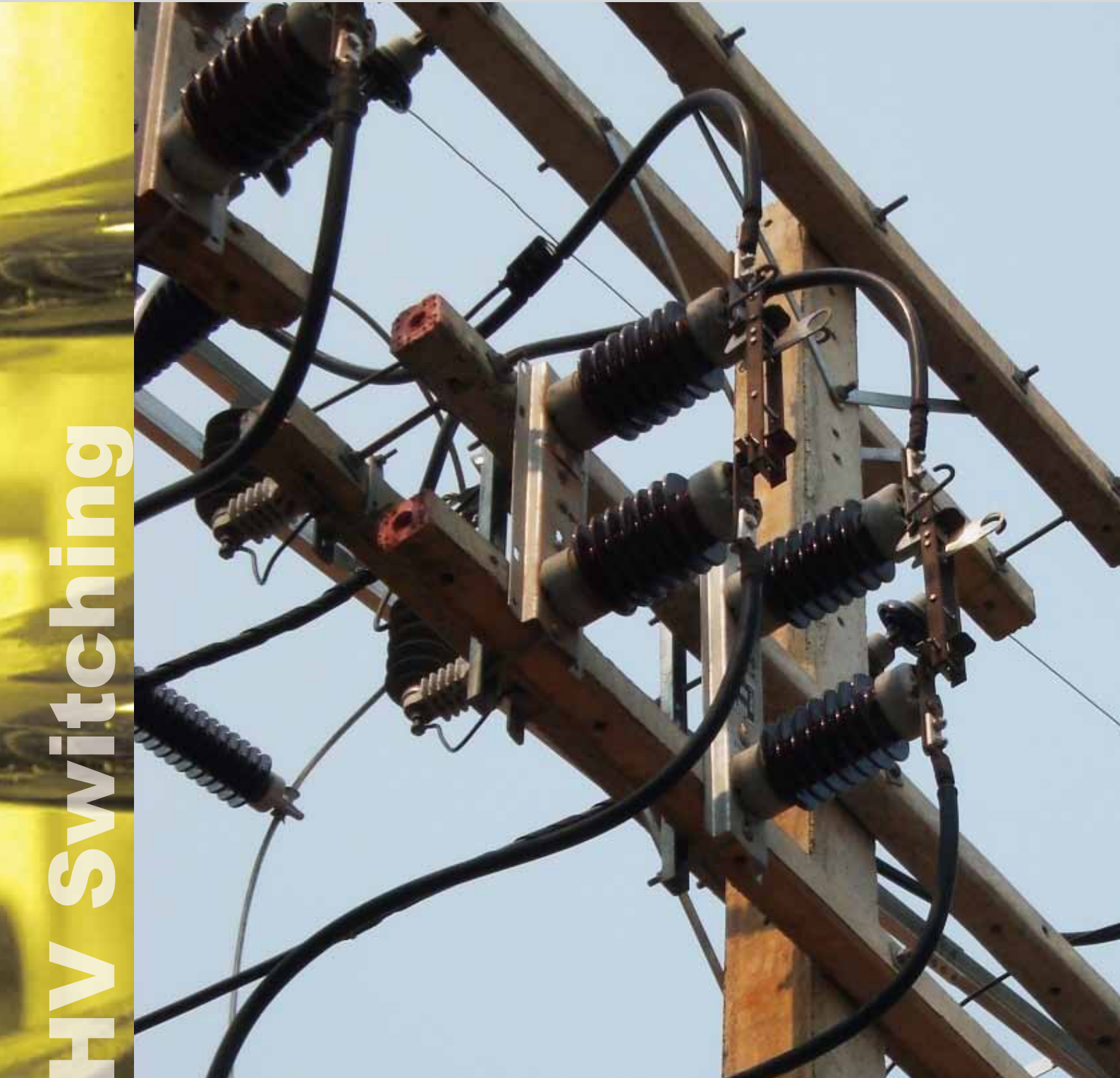


SLOC/D 17.5-72.5 kV Hookstick operated disconnect



HV Switching

We know how

Our range of hookstick operated disconnectors is designed to ensure the best performances and reliability, which are the result of our 70-year old experience. Over 100,000 disconnectors installed in more than 100 countries worldwide are the guarantee of best-buys.

The SLOC/D hookstick operated disconnector

The SLOC/D disconnector consists of a supporting base on which two post insulators are mounted. The insulators carry, at the top, the main circuit, which consists of a swivel arm and a fixed contact and is provided with two flat terminals.

The whole main circuit is made of copper; when necessary (depending on the rated current), contact zones are silver plated.

The arm is provided with a sturdy, stainless steel, ring for the operation by means of an insulating hookstick (not included in the supply).

The base frame is made of hot-dip galvanized steel.

The insulators comply with either IEC or ANSI standards; special heights and creepage distances are available upon request.

Upon request, the equipment can be fitted with hooks that allow the use of suitable tools to switch the circuit under load; mounting hardwares and rear support are also available for installation on cross arms.

Like all our models, the SLOC/D complies with the latest international standards (IEC, ANSI), but can also be customized according to clients' particular specifications.

The whole design and manufacturing process is ruled by ISO 9001 certified procedures, to guarantee perfect performance reproducibility from type-testing to series production.

The use of corrosion-free or suitably protected materials, lifetime greased or self-lubricated hinges and self-wiping contacts ensures an exceptional reliability of the equipment over many years of service, with no need for special maintenance even under the harshest environmental conditions.

Ratings and dimensions

The values in the table refer to IEC standards, unless explicit reference to ANSI is made; for missing ANSI ratings, refer to C37.32

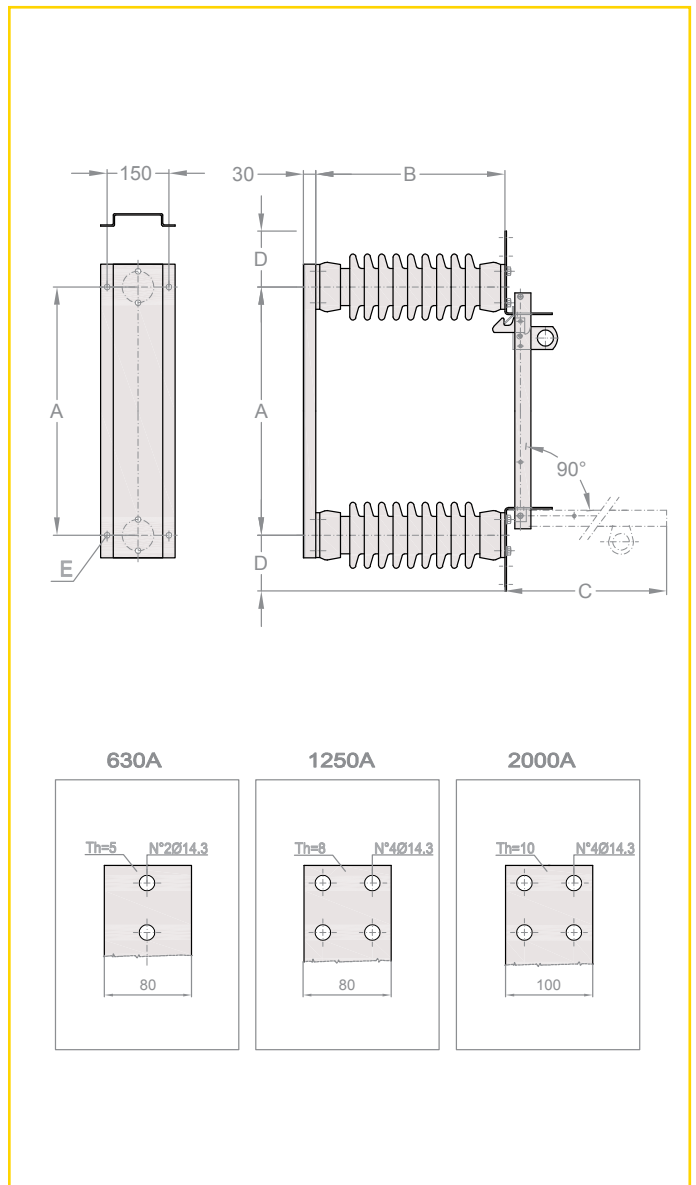
Rated voltage		U_r (kV)	17,5	24	36
Rated power-frequency withstand voltage	TE	U_d (kV)	38	50	70
	AID	U_d (kV)	45	60	80
Rated lightning impulse withstand voltage	TE	U_p (kV _p)	95 (IEC) 110 (ANSI)	125 (IEC) 150 (ANSI)	170
	AID	U_p (kV _p)	110	145	195

TE: To Earth

AID: Across the Isolating Distance

Rated continuous current	I_r (A)	up to 2000 IEC / ANSI (depending on rated voltage)
Rated short-time withstand current	I_k (kA)	up to 40 / 3 s (depending on rated current)
Rated peak withstand current	I_p (kA _p)	up to 100 (depending on rated current)

Dimensions (mm)	A	410	460	610
B	255	305	445	
C	425	475	625	
D	135	135	135	
E	4 \varnothing 14	4 \varnothing 14	4 \varnothing 14	



COELME

Via G. Galilei, 1/2 - 30036 Santa Maria di Sala (VE) - Italia
Tel.: +39 041 486022 - Fax: +39 041 486909

E-Mail: contact@coelme-egic.com, www.coelme-egic.com



EGIC

60b, rue L. et R. Desgrand - 69625 Villeurbanne CEDEX - France
Tel.: +33 4 72 66 20 70 - Fax: +33 4 72 39 08 65

E-Mail: contact@coelme-egic.com, www.coelme-egic.com

